

BENCOR (Pty) Ltd.

Pumps



Compact hydraulic power packs type HC

These ready for connection hydraulic power packs are intended for intermittent operation and used to supply pressurized fluid to consumers with low fluid demand, such as for jigs or machine tools or general machine building.

The power pack consists of a housing (tank) with integrated motor and pump. The electrical connection takes place via an integrated terminal box.

Complete hydraulic control systems can be created by directly mounting various combinations of connection blocks and valve banks to the hydraulic power pack.

Nomenclature: Radial piston pump with integrated electric motor (3- and 1-phase version)

Design: Oil immersed hydraulic power pack for intermittent service (S 3-service)

p_{max}: 700 bar

Q_{max}: approx. 12,9 l/min
(V_g = 4,6 cm³ /rev)

V_{usable max}: 3,5 l

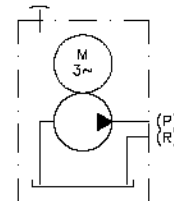


Basic types and general parameters

Basic type and size Parameter: Delivery flow Q_{pu} (l/min), approximate reference value and max. pressure p_{max} (bar) ¹⁾

Symbol

Basic type and size	Q _{pu}	0,2	0,31	0,45	0,61	0,83	1,05								
HC 14	Q _{pu}	0,2	0,31	0,45	0,61	0,83	1,05								
	p _{max}	700	650	450	315	240	160								
HC 12	Q _{pu}	0,4	0,65	0,94	1,28	1,7	2,15								
	p _{max}	600	380	260	200	150	120								
HC 24	Q _{pu}	0,27	0,42	0,64	0,81	1,1	1,35								
	p _{max}	700	700	700	515	400	300								
HC 22	Q _{pu}	0,52	0,82	1,17	1,58	2,06	2,61								
	p _{max}	700	700	550	400	300	240								
HC 34	Q _{pu}	0,9	1,25	1,5	2,5	3,6	4,3	5,1	5,6	6,5					
	p _{max}	700	700	600	400	300	250	210	180	150					
HC 32	Q _{pu}	1,75	2,45	3,0	4,9	7,1	8,5	10,2	11,1	12,9					
	p _{max}	700	550	400	250	160	120	100	80	65					



Additional parameter

Basic type and size	Rev. rating n _N (min ⁻¹)	P _N (kW) ²⁾	V _{usable} (l)	Nom. voltage
HC 14	1380	0,18	0,5	3 ~ 400 V √ 50 Hz ³⁾
HC 12	2860	0,25	0,5	3 ~ 230 V Δ 50 Hz ³⁾
HC 24	1390	0,55	1,5	3 ~ 500 V √ 50 Hz
HC 22	2880	0,55	1,5	
HC 34	1410	1,1	3,5	
HC 32	2850	1,5	3,5	

¹⁾ Q_{pu} applies for mains 50 Hz, Q ~ 1,2 Q_{pu} for mains 60 Hz

²⁾ The actual power input is dependent on the respective operation pressure and can be up to 1,5 x P_N.

³⁾ Also suitable for mains 3 - 460 or 265 V √ Δ 60 Hz