

BENCOR (Pty) Ltd.

Seated valves

HAWES
HYDRAULIK

Directional seated valves type VZP

These type VZP use spring loaded balls or cones as valve elements and therefore do not show any leakage. They are manifold mounting and are available in one sizes. The twin lay-out of the 3/2- and 2/2-way directional seated valve elements, identical or similar to valves with single lay-out, and the actuation solenoids are housed in a shared valve body, making them very compact.

Depending on pairing, these valves can fulfill either one 4/4-, 4/3-, 3/3-way function or two independent 3/2- and 2/2-way functions.

When compared with single valves of conventional lay-out, the twin design is more advantageous due to lower spatial requirements and the possibility to mount pressure switches monitoring the consumer pressure. Especially the valve banks type BVZP consisting of several valves of this type, connected in parallel, propel these features and benefits.



Nomenclature: Directional seated valve, leakage free

Design: Individual valve, manifold mounting

Actuation: Solenoid

P_{max}: 250 ... 450 bar

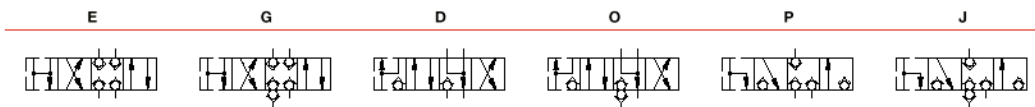
Q_{max}: 5 ... 15 l/min

Basic types and general parameters

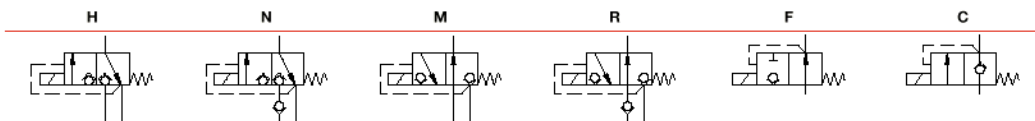
Basic type and size	Flow Q _{max} (l/min)	Oper. pressure p _{max} (bar)	Perm. reflow pressure (bar)
VZP1	5 ... 15	250 ... 450	20

Flow pattern

cone seated valves with 4/3- (4/4-) or 3/3- (3/4-) way functions up to 400 bar



ball seated valves with 3/2- (2/2-) way functions up to 450 bar (always two valve functions in one valve body)



Solenoid voltage

- 12V DC, 24V DC, 230V AC 50/60 Hz
 - Other voltage on request
 - Plug with LED, improving EMC.
- (see also section "Additional information")

Additional versions

- 4/2-way function, directional spool valve
- Individual valve with orifice in port P and / or return pressure stop in the port R
- Pressure switches connected to the consumer port