

BENCOR (Pty) Ltd.

Seated valves



Directional seated valves with various actuations

These directional seated valves use spring loaded balls as valve elements and therefore do not show any leakage. They are manifold mounting and are available with various actuations which always acts on an angled lever pushing the valve element in the desired switching position.

The basic versions are designed as 2/2- and 3/2-way directional valves. 3/3-, 4/3-way functions are possible if two valves are housed in one valve body, whereas 4/2-way functions require an additional intermediate plate. These valves may be directly installed in pipe systems, when equipped with sub-plates enabling pipe connection. Many optional functions incorporated in these sub-plates i.e. pressure limiting valve or restrictor check valve widen the field of application for this valve type.



Valve banks of these valves are also available featuring several valves connected in parallel (see type VB).

Nomenclature: Directional seated valve, leakage free

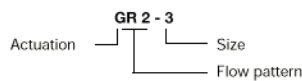
Design: Individual valve, manifold mounting combination with connection blocks for pipe connection

Actuation: Solenoid
Pressure actuated
• hydraulic
• pneumatic
Mechanical
• roller
• pin
Manual
• hand lever
• adjusting knob

p_{max} : 320 ... 700 bar

Q_{max} : 6 ... 120 l/min

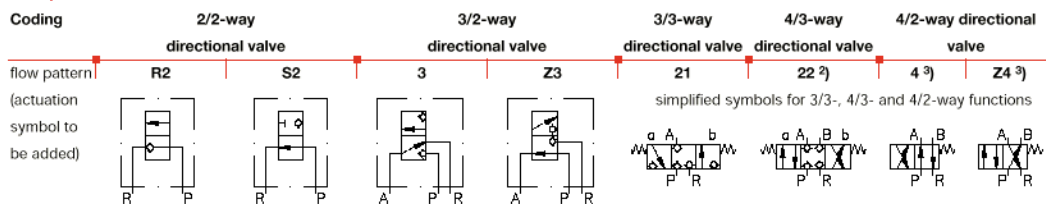
Type coding:



Basic types and general parameters

Size	Flow Q_{max} (l/min)	Basic type (actuation) with oper. pressure p_{max} (bar)						Tapped ports P, R, A, B ¹⁾
		Solenoid actuated		pressure actuated		mechanically actuated		
		G	WG	H	P	K	F	
0	6	300 ... 500	500	-	350 ... 500	G 1/4	¹⁾ when combined with sub-plate for pipe connection	
1	12	350 ... 500 (700)	500 ... 700	400 ... 700	400 ... 700	G 1/4 and G 3/8		
2	25	350 ... 500 (700)	500	400 ... 500	400 ... 500	G 3/8 and G 1/2		
3	65	350 ... 400	400	350 ... 400	-	G 1/2 and G 3/4		
4	120	350	-	-	-	G 3/4 and G 1		

Flow pattern



²⁾ not for size 4
³⁾ only size 1