

# BENCOR (Pty) Ltd.

Pumps



## Dual stage pumps type RZ

Dual stage pumps consist of a high pressure section (radial piston pump, HP) and a directly coupled low pressure section (gear pump, LP). The pump is usually driven by an electric motor, which is connected with the pump by means of a flange and a coupling.

Complete hydraulic control systems (e.g. for presses) can be created by directly mounting dual stage valves or valve banks to the cover plate of the hydraulic power pack.



<b>Nomenclature:</b>	Dual stage pump (radial piston and gear pump)
<b>Design:</b>	Individual pump Pump complete with motor Hydraulic power pack
<b><math>p_{max}</math>:</b>	700 bar (radial piston pump) 150 bar (gear pump)
<b><math>Q_{max}</math>:</b>	Radial piston pump 91,2 l/min (high pressure) ( $V_g = 64,18 \text{ cm}^3/\text{rev}$ ) Gear pump 135 l/min (low pressure) ( $V_g = 89,6 \text{ cm}^3/\text{rev}$ )
<b><math>Q_{tank max}</math>:</b>	approx. 470 l

### Basic types and general parameters

High pressure section (like radial piston pump type R)

Basic type RZ..

Design (Delivery flow  $Q_{pu}$  (l/min), approximate reference value at 1450 rpm) and max. pressure  $p_{max}$  (bar) <sup>1)</sup>

	700 bar	450 bar	250 bar
7631	RZ 0,18...	RZ 0,64...	RZ 2,27...
6910	RZ 0,9...	RZ 2,5...	RZ 5,1...
6911	RZ 1,4...	RZ 5,8...	RZ 11,8...
6912	RZ 2,7...	RZ 8,2...	RZ 16,8...
6914	RZ 8,0...	RZ 23,0...	RZ 47,0...
6916	RZ 12,7...	RZ 34,5...	RZ 70,0...

Low pressure section (gear pump type Z)

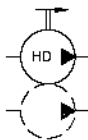
Size  $Q_{pu}$  (l/min) and max. pressure  $p_{max}$  (bar) <sup>1)</sup>

	120 bar	80 bar	40...60 bar
/1	5,2	8,8	11,3
/2	12,3	16	37
/3	24	110	135

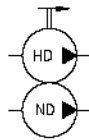
<sup>1)</sup> The parameter listed here represent only a choice from a variety of possibilities.

### Symbols

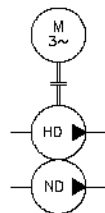
Individual pump, only high pressure section, low pressure section is customer furnished



Individual pump, high pressure section and low pressure section



Pump complete with motor



Hydraulic power pack

