

# BENCOR (Pty) Ltd.

Pressure valves



## Load holding valves type LHK and LHDV

Load holding valves are pressure valves, which act always on the reflow side of double acting consumers. They block the reflow duct according to their set pressure (setting approx. 15% above the max. load pressure) generating a counter force to a pushing (negative) load. Therefore the pump will have to feed the inflow side, i.e. pressurizing the the cylinder enough to overcome the set pressure of the load holding valve, thereby dropping the load.

Type LHK is intended for applications which are hardly prone for oscillations.

Whereas type LHDV with its special dampening characteristic is especially suited for applications together with prop. directional spool valves ("Load Sensing" spool valves) e.g. type PSL/PSV. Many additional options are available such as shock valves, shuttle valves with or without by pass check valve (e.g. delayed release of hydraulic brakes) etc.



**Nomenclature:** Load holding valve (over center valve, for one sided or alternating load direction ) as single or twin valve

**Design:** Individual valve for pipe connection  
Individual valve, manifold mounting  
Screw-in valve  
Version for banjo bolt mounting

**p<sub>max</sub>:** 360...420 bar

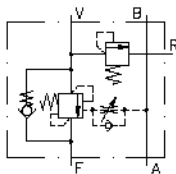
**Q<sub>max</sub>:** 100 l/min

### Basic types and general parameters

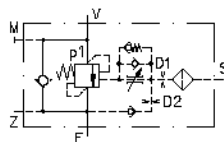
Basic type and size	Flow Q <sub>max</sub> (l/min)	Oper. pressure p <sub>max</sub> (bar)	Release ratio	Tapped ports
LHK 22	20	400	1 : 4,6	G 3/8
LHK 33	60	360	1 : 4,4	G 1/2
LHK 44	100	350	1 : 4,4	G 3/4
LHDV 33	80	420	1 : 2,9 (standard)	G 1/2

### Symbols (examples)

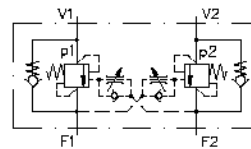
LHK 33 G-15-...



LHDV 33 P-11-...



LHK 44 G-21-...



LHDV 33 G-25WD-...

