

BENCOR (Pty) Ltd.

Pumps



Radial piston pumps type R

The radial piston pumps consist of radially arranged, valve controlled pumping pistons. Higher delivery flows can be created by stacking of up to 6 sections on a common shaft. The pump is commonly driven by an electric motor, which is connected with the pump by means of a flange and a coupling .

The closed pump housing permits "in tank" installation (hydraulic power pack) as well as the common external pump/ motor installation (pump with motor). The possibility of a radial piston pump with several pressure outlets (several equal or differing delivery flows) is particularly innovative. Complete hydraulic control systems can be created by directly mounting

various connection blocks and valve banks to the cover plate of the hydraulic power pack.



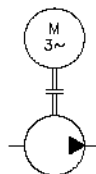
Nomenclature:	Radial piston pump
Design:	Individual pump Pump complete with motor Hydraulic power pack
P_{max}:	700 bar
Q_{max}:	91,2 l/min (V _g = 64,18 cm ³ /rev)
V_{tank max} :	approx. 470 l

Symbols

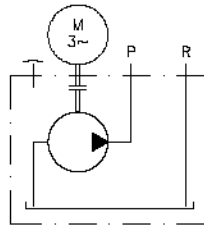
Individual pump



Pump complete with motor



Hydraulic power pack



Pump with several pressure outlets (example for individual pump)

